



NEW PALTZ CENTRAL SCHOOL DISTRICT

Comprehensive Facilities Master Plan – Progress Report Summary



Agenda

Summary of progress:

- Needs:
 - Infrastructure (2013 update of 2010 Building Condition Survey)
 - Program (from user group interviews with administrators)
- Potential Solutions: Conceptual Design Options
- Financials: Associated Costs and Savings

Building Condition Survey Update

The Building Condition Survey (BCS) is:

- Required by New York State Education Law under Title 8, Chapter II Regulations of the Commissioner, Part 155.4 – Uniform Code of Public School Building Inspections, Safety Rating and Monitoring.
- Mandated to be completed every 5 years, since 2000
- Designed:
“To insure that all occupied facilities are properly maintained and preserved to provide for a suitable educational setting...”

Building Condition Survey Update

The Building Condition Survey (BCS) is:

- Required by New York State Education Law under Title 8, Chapter II Regulations of the Commissioner, Part 155.4 – Uniform Code of Public School Building Inspections, Safety Rating and Monitoring.
- Mandated to be completed every 5 years, since 2000
- Designed:
“To insure that all occupied facilities are properly maintained and preserved to provide for a suitable educational setting...”

Infrastructure Needs

Update infrastructure in existing buildings

Examples (In priority order):

1. Health & Safety Systems – Fire Alarm, Ventilation, Security, Emergency Lighting
2. Envelope – Roofing, Masonry, Windows
3. Accessibility & Circulation
4. Site – Sidewalks, Drainage, Paving
4. Other Systems – Piping, Wiring, General Lighting
5. Interior Environment – Doors, Flooring, Ceilings

Infrastructure Needs

Summary Update of 2010 Building Condition Report

	Priority 1	Priority 2	Priority 3	Priority 4	Bldg. Totals
Middle School	\$3,468,139	\$2,966,871	\$2,326,095	\$2,388,620	\$11,149,725
Duzine	\$572,933	\$1,460,020	\$269,314	\$488,634	\$2,790,901
High School	\$617,522	\$1,032,705	\$5,442,758	\$745,789	\$7,838,773
Lenape	\$529,437	\$323,352	\$805,120	\$896,273	\$2,554,182
Totals	\$5,188,031	\$5,782,949	\$8,843,287	\$4,519,316	\$24,333,582

Priority 1 - Safety & ADA Accessibility Related

Priority 2 - Health & Property Related

Priority 3 – Age Related & Code Updates

Priority 4 - Preventative Maintenance

2013 Option A vs. 2012 Option 1

Summary of Health & Safety Items - District Summary

SECTION 2

OPTION 1

New Paltz Central School District

March 15, 2012

The following is a summary (by building) of all Health and Safety items as identified in the 2010 Building Condition Survey that were rated as unsatisfactory, Non-Functioning or Critical Failure and proposed to be addressed with a capital bond referendum.

CSArch Project No: 105-12-01

Building Name	Priority 1 (2013)			Priority 2 (2014)			TOTAL Priority 1 & 2
	Total Health & Safety Costs ¹	Estimated Incidental Costs ²	Total Project Costs	Total Health & Safety Costs ³	Estimated Incidental Costs ²	Total Project Cost	
New Paltz High School	\$1,882,368	\$376,474	\$2,258,842	\$1,017,431	\$203,486	\$1,220,917	\$3,479,759
New Paltz Middle School	\$4,454,893	\$890,979	\$5,345,871	\$890,066	\$178,013	\$1,068,079	\$6,413,950
Lenape Elementary School	\$271,390	\$54,278	\$325,668	\$126,980	\$25,396	\$152,376	\$478,044
Duzine Elementary School	\$1,126,065	\$225,213	\$1,351,277	\$420,768	\$84,154	\$504,922	\$1,856,199
District Total	\$7,734,715	\$1,546,943	\$9,281,658	\$2,455,245	\$491,049	\$2,946,294	\$12,227,952
Alternate Roofing Material			-\$735,985			\$0	-\$735,985

Total with Alternate

\$8,545,673

\$11,491,967

Notes:

¹Total Health & Safety Costs includes 4% estimating contingency, 4% annual escalation to summer 2013 and 7% construction contingency

²Incidental costs are estimated at 20% and include A/E Professional Fees, Construction Manager, administrative costs, insurances, limited fixtures, furnishings & equipment, special inspections and construction testing.

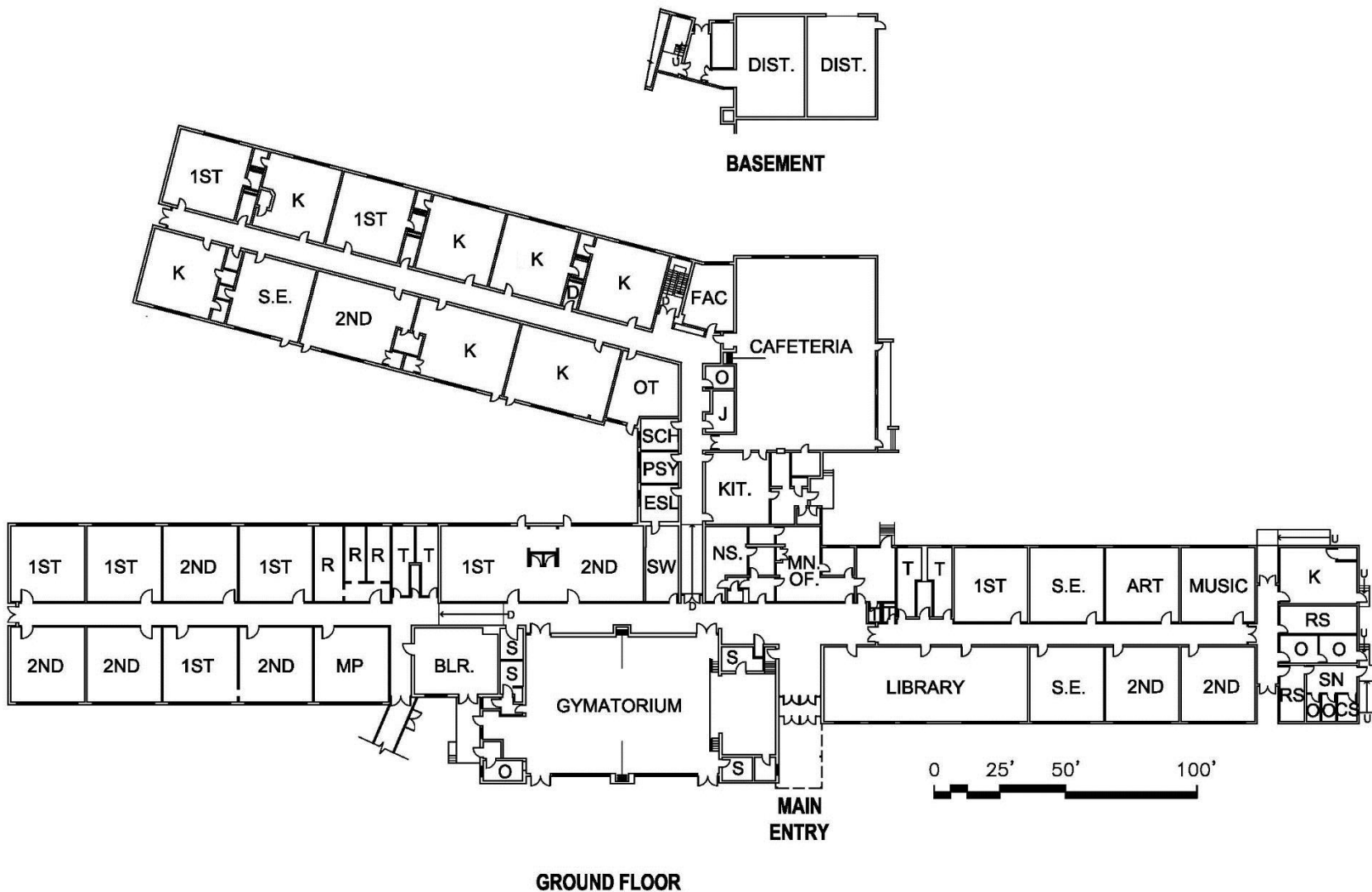
³Total Health & Safety Costs includes 4% estimating contingency, 4% annual escalation to summer 2014 and 7% construction contingency

2013 Option A vs. 2012 Option 1

Potential 2012 project - included only Priorities 1 & 2 valued at \$11,491,967

Current Option A project - if you isolate only Priorities 1 & 2 is valued at \$10,970,980 (because facilities team has already accomplished some priority 1 work)

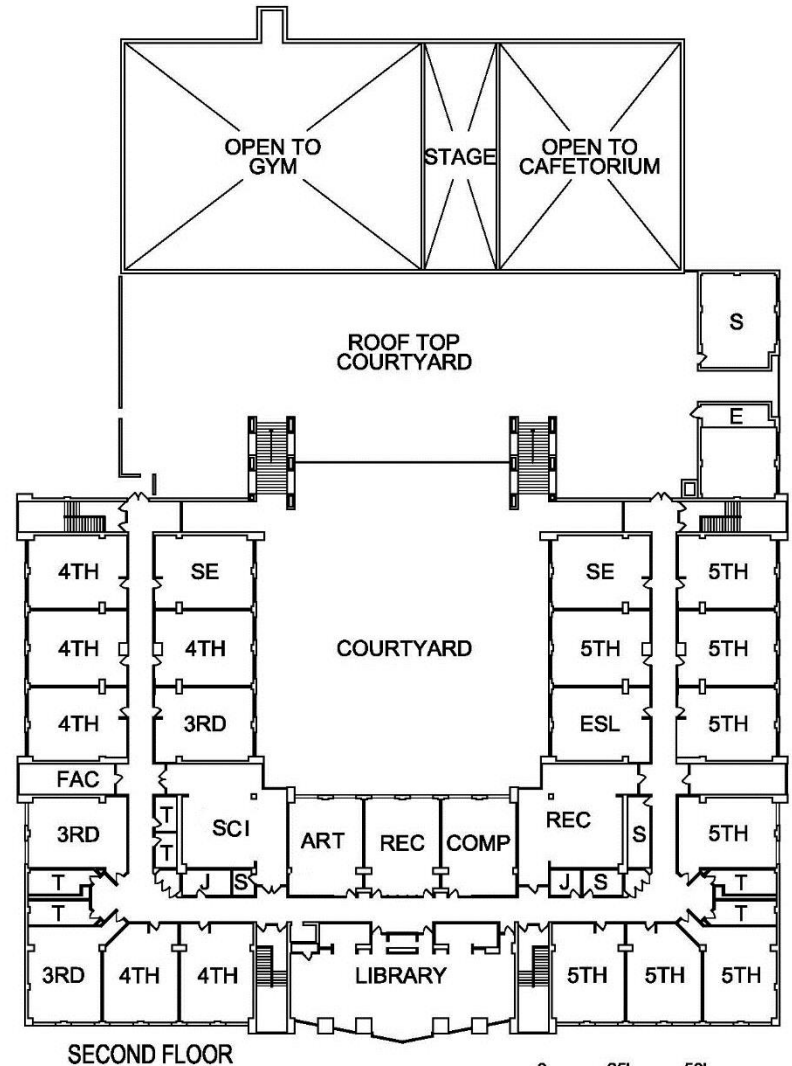
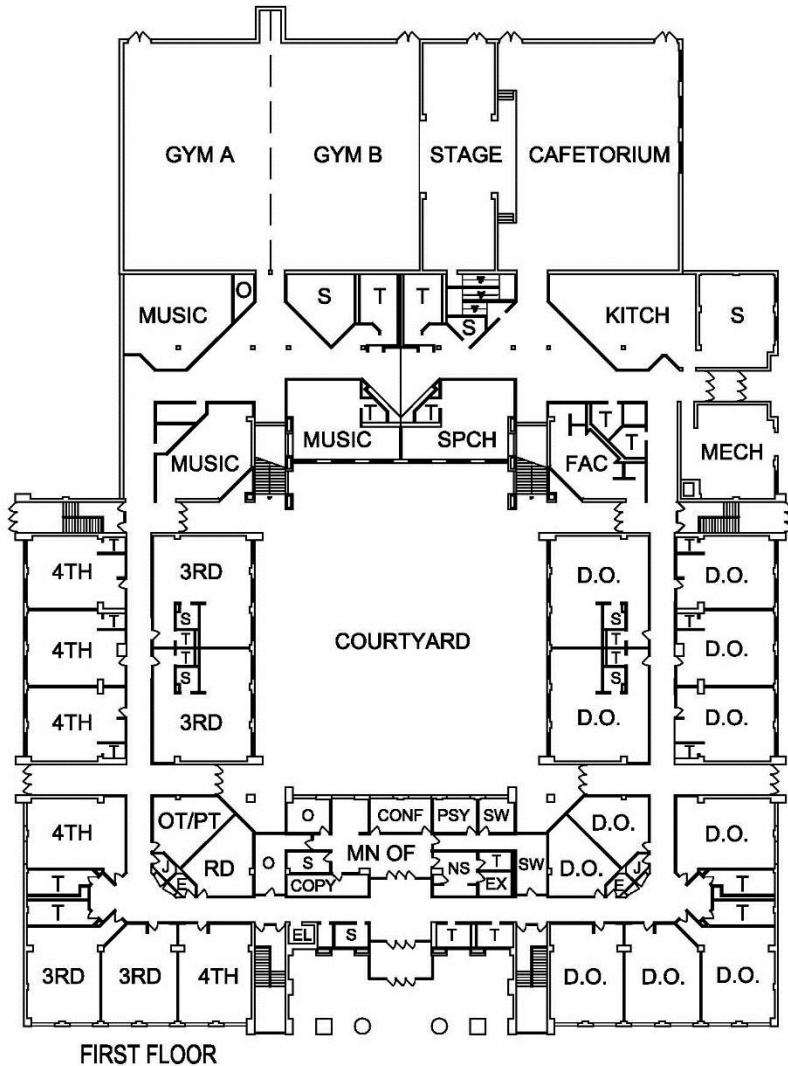
Existing Floor Plan – Duzine



Facility Needs to Enhance Educational Program – Duzine

- Upgrade Library to 21st Century Media Center
- Provide for secure, efficient visitor entry procedure
- Improve logistics of meal serving and space use
- Improve circulation and ADA accessibility
- Upgrade restroom facilities and shorten travel
- Provide adequate performance rehearsal space
- Integrate cutting edge technology

Existing Floor Plans – Lenape

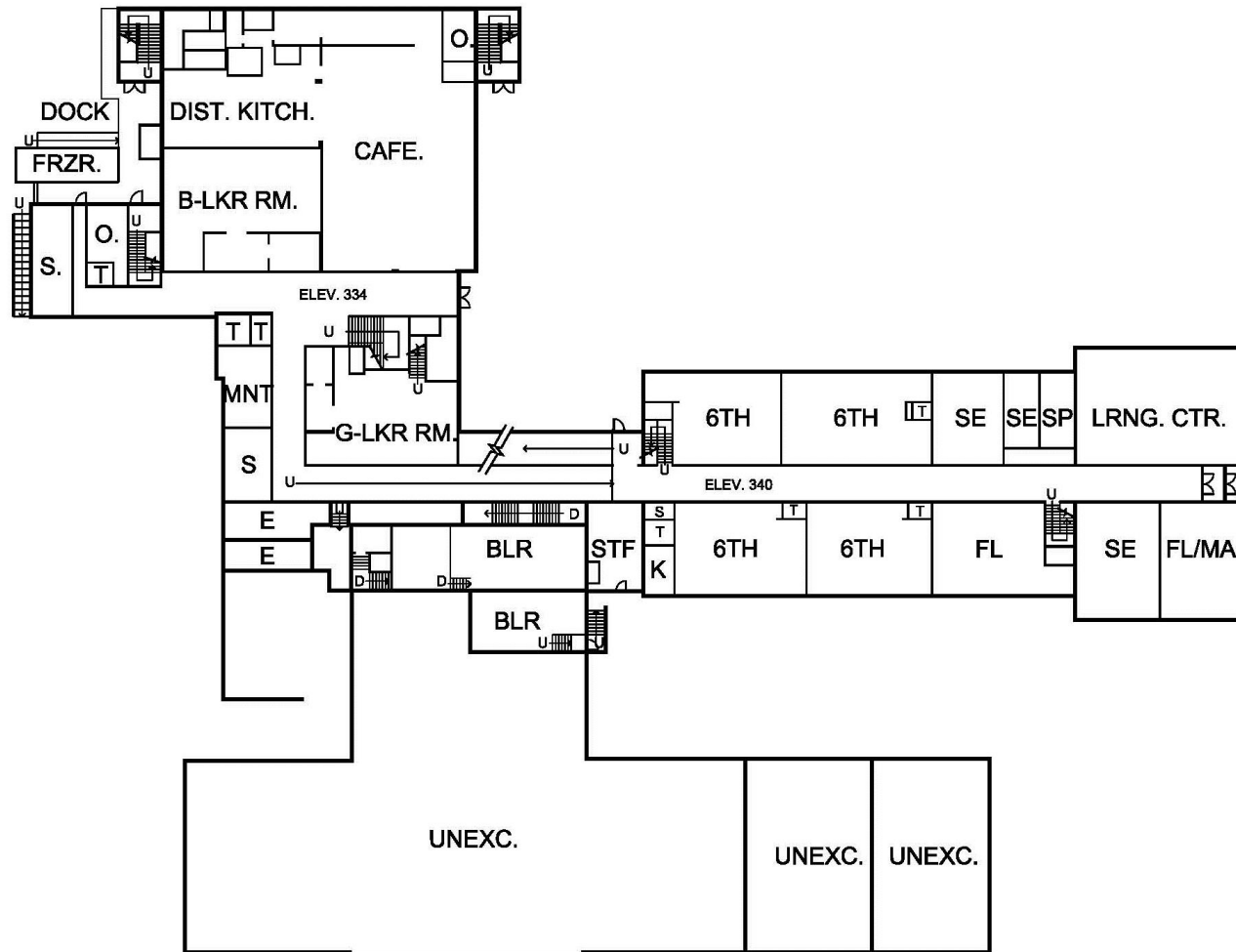


0 25' 50' 100'

Facility Needs to Enhance Educational Program – Lenape

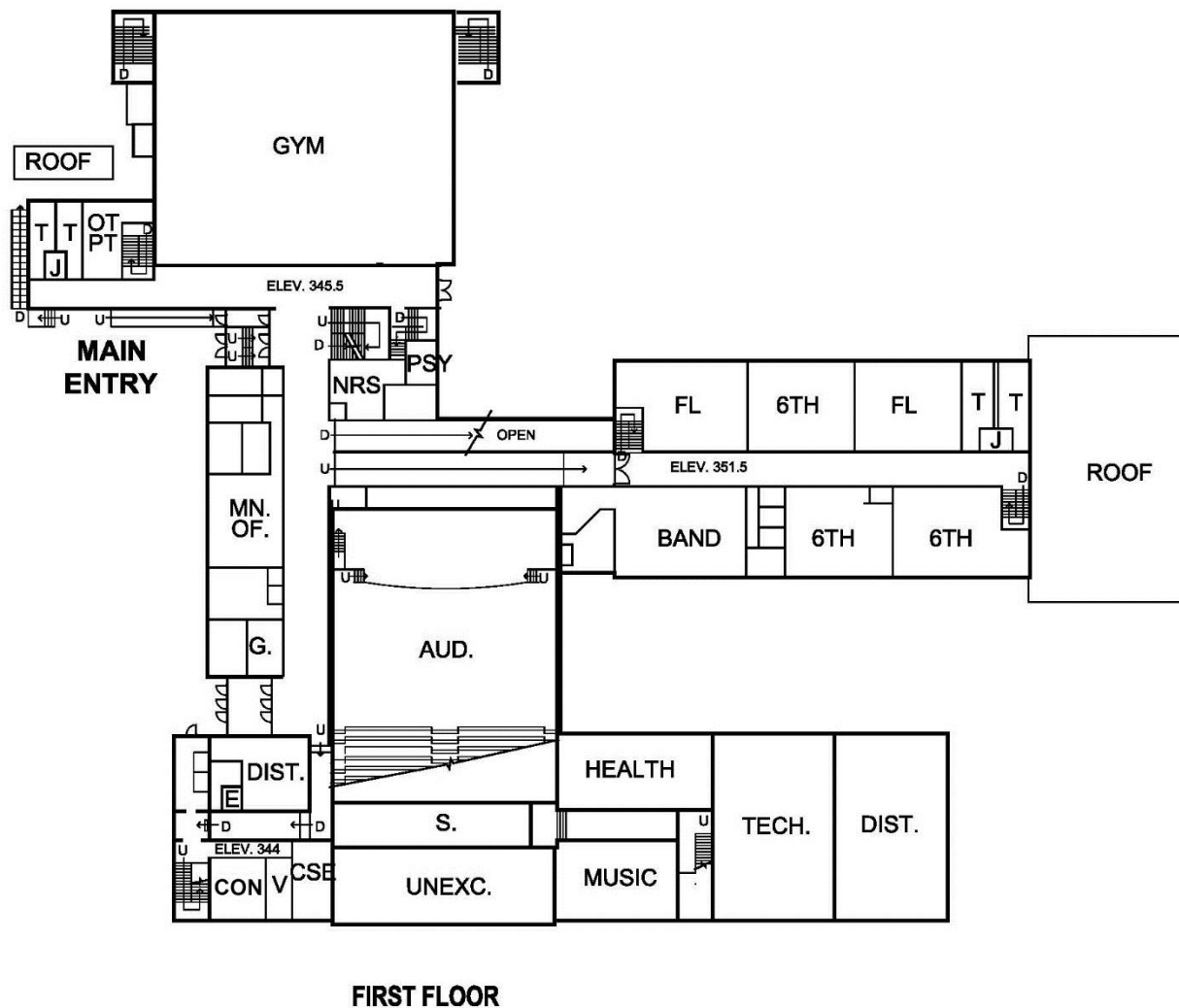
- Provide facilities to support performing arts programs and allow full band or play cast assembly for rehearsal without disrupting gym and cafeteria
- Provide flexible athletic facilities to support sports program
- Upgrade Library to 21st Century Media Center
- Integrate cutting edge technology
- Provide flexible space for student support, meetings, staff development, etc...

Existing Floor Plans – Middle School

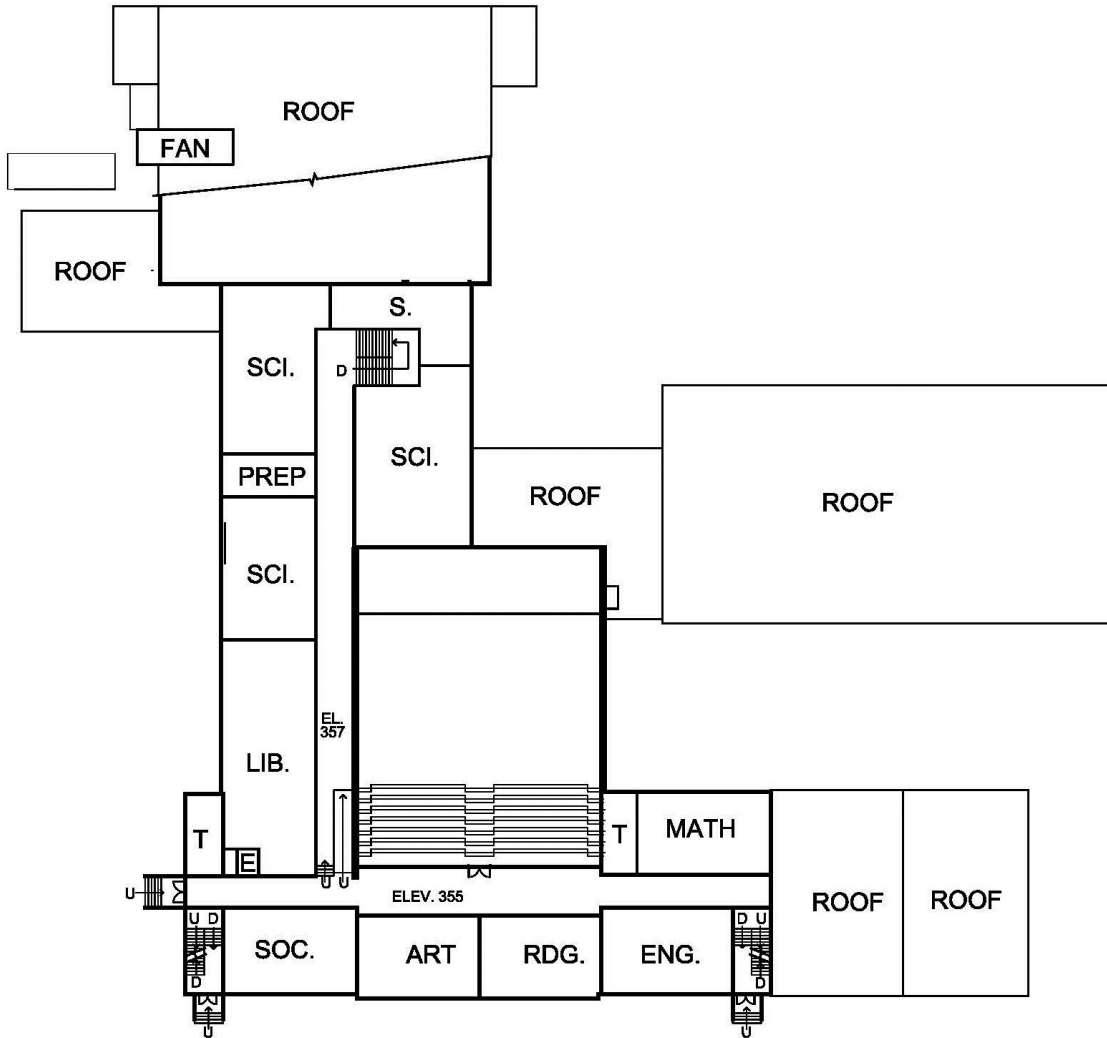


GROUND FLOOR

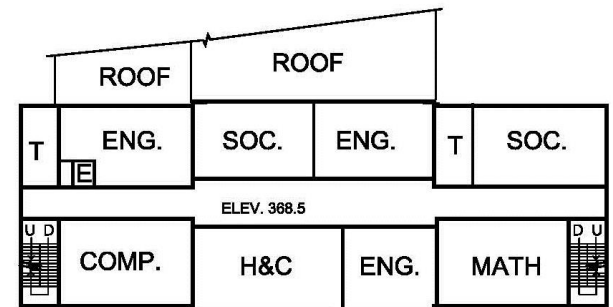
Existing Floor Plans – Middle School



Existing Floor Plans – Middle School



SECOND FLOOR



THIRD FLOOR

Facility Needs to Enhance Educational Program – Middle School

- Provide flexible instructional space with technology rich centralized project areas (“Pod Model”)
- Provide sufficient instructional space to offer expanding choices for special subjects
- Improve circulation, wayfinding & ADA accessibility
- Upgrade Library to 21st Century Media Center
- Upgrade Home & Career and Technology centers

Facility Needs to Enhance Educational Program – Middle School (continued)

- Provide performing arts facilities that foster a growing and increasingly sophisticated program
- Integrate cutting edge technology
- Expand District Kitchen to keep pace with expanding meal programs, evolving state regulations and offering of healthy options
- Expand cafeteria seating capacity to be able to assemble full student body

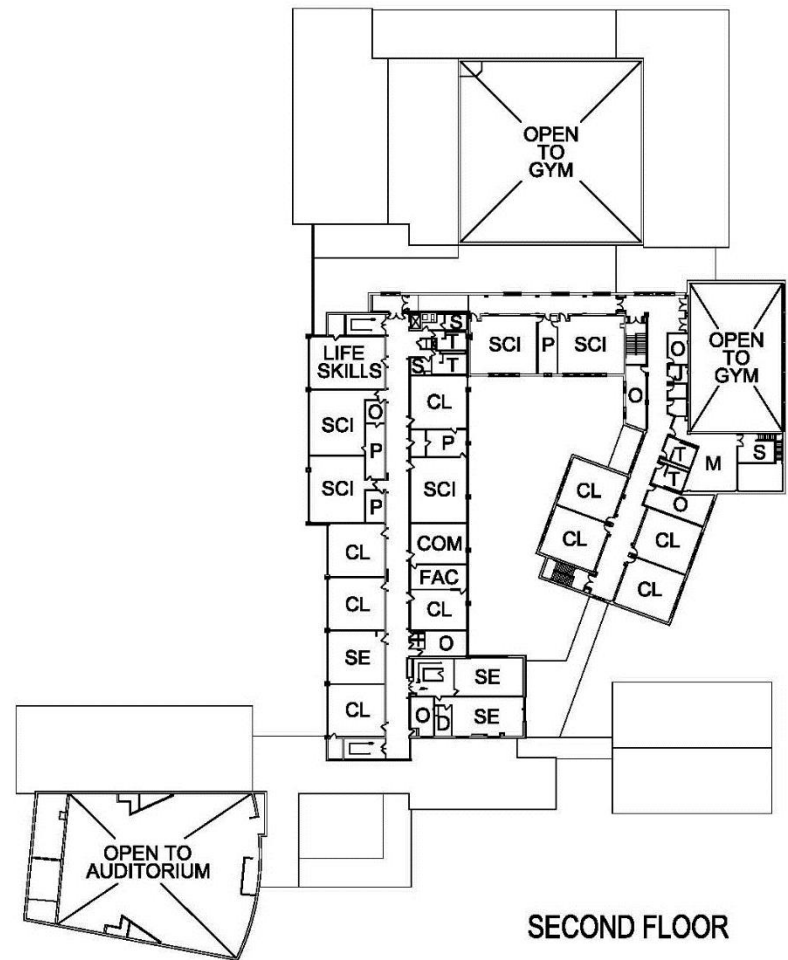
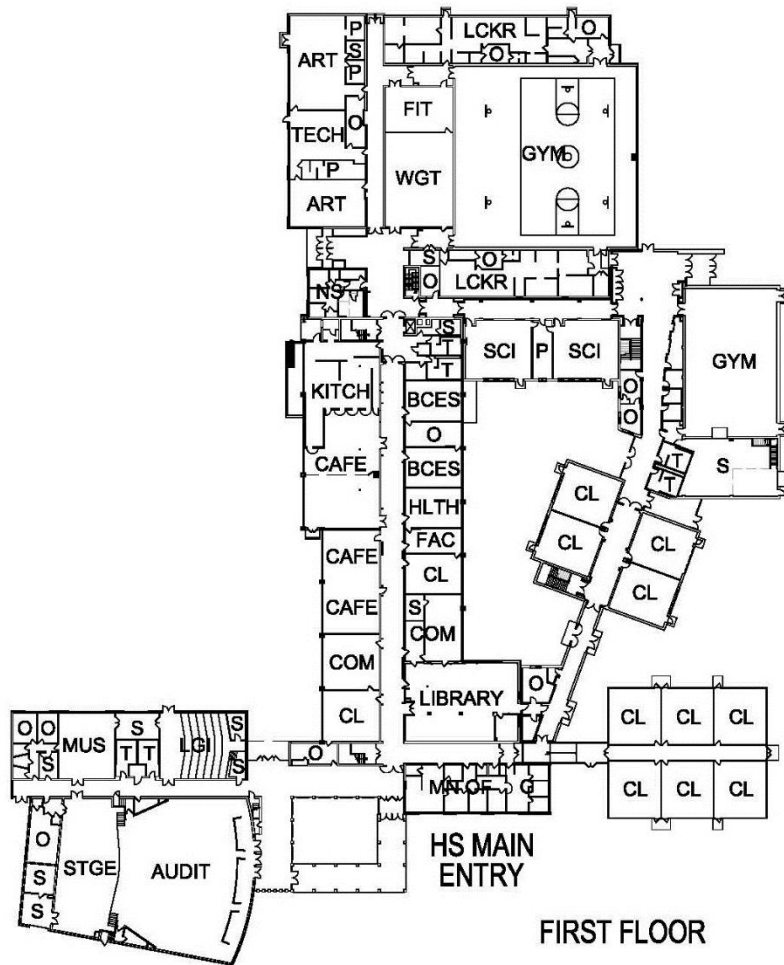
...(continued) on next page

Educational Program Needs – MS

“Pod Concept”



Existing Floor Plans – High School



Facility Needs to Enhance Educational Program – High School

- Upgrade Library to 21st Century Media Center (accounting for distance learning i.e. Kahn Academy type of future technology)
- Provide sufficient flexible instructional space to expanding curriculum and project-based methods
- Provide a technology rich, easily accessible pupil support, guidance, and career research hub to engage students and allow flexible group meetings

...(continued) on next page

Facility Needs to Enhance Educational Program – High School (continued)

- Upgraded, flexible kitchen & cafeteria to accommodate changing nutritional programs & serve as multi-purpose space
- Upgrade outdated, gym locker rooms, provide ADA access & provide changing area for visiting athletes (relates to security & student well-being)
- Provide expanded and updated conference spaces
- Provide additional athletic fields to support added sports such as lacrosse and soccer and to allow fields proper time to rest between use (requires land acquisition not included in budget)

Conceptual Design Options (projects)

A - Infrastructure Only *(5 Year Capital Plan)*

Upgrade for 21st Century Educational Model

B - Renovations/Additions at each School

C - 3 Campus Model

New Middle School AT High School

D - 2 Campus Model

New Middle School at High School &

Add Duzine to Lenape (move District Office to HS)

E - 3 Campus Model

Just add Duzine to Lenape (move Dist. Office to HS)

21st Century Schools

educational trends

- schools within a school
- project-based learning
- Technology rich
- community integration
- multi-purpose spaces
- small group instruction

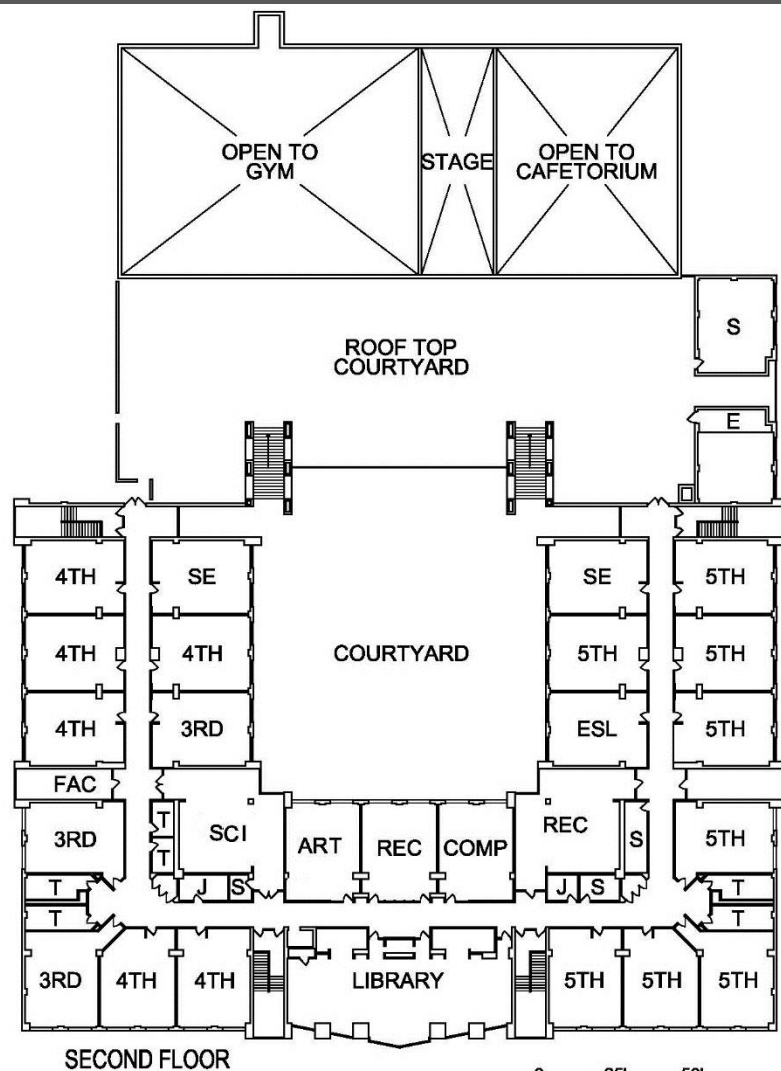
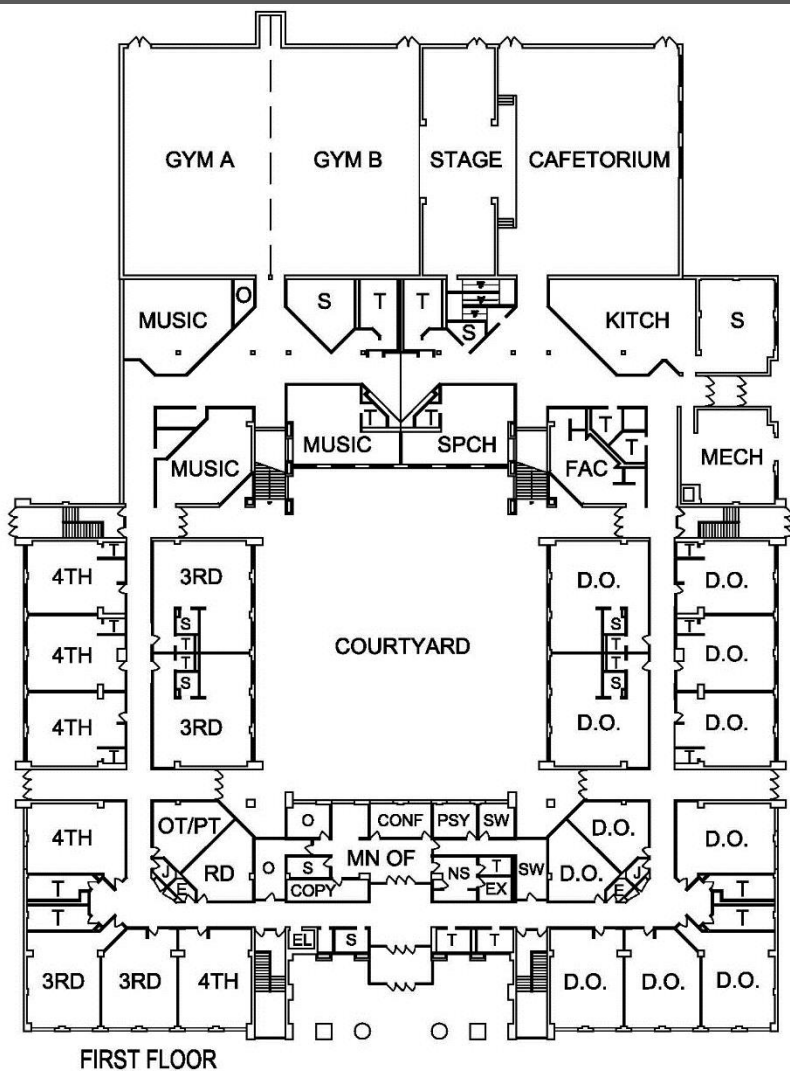
sustainable design

- reduce energy use
- daylighting & ventilation
- materials (renewable & non-toxic)
- educational opportunity

Renovations at Duzine – Opt B or C



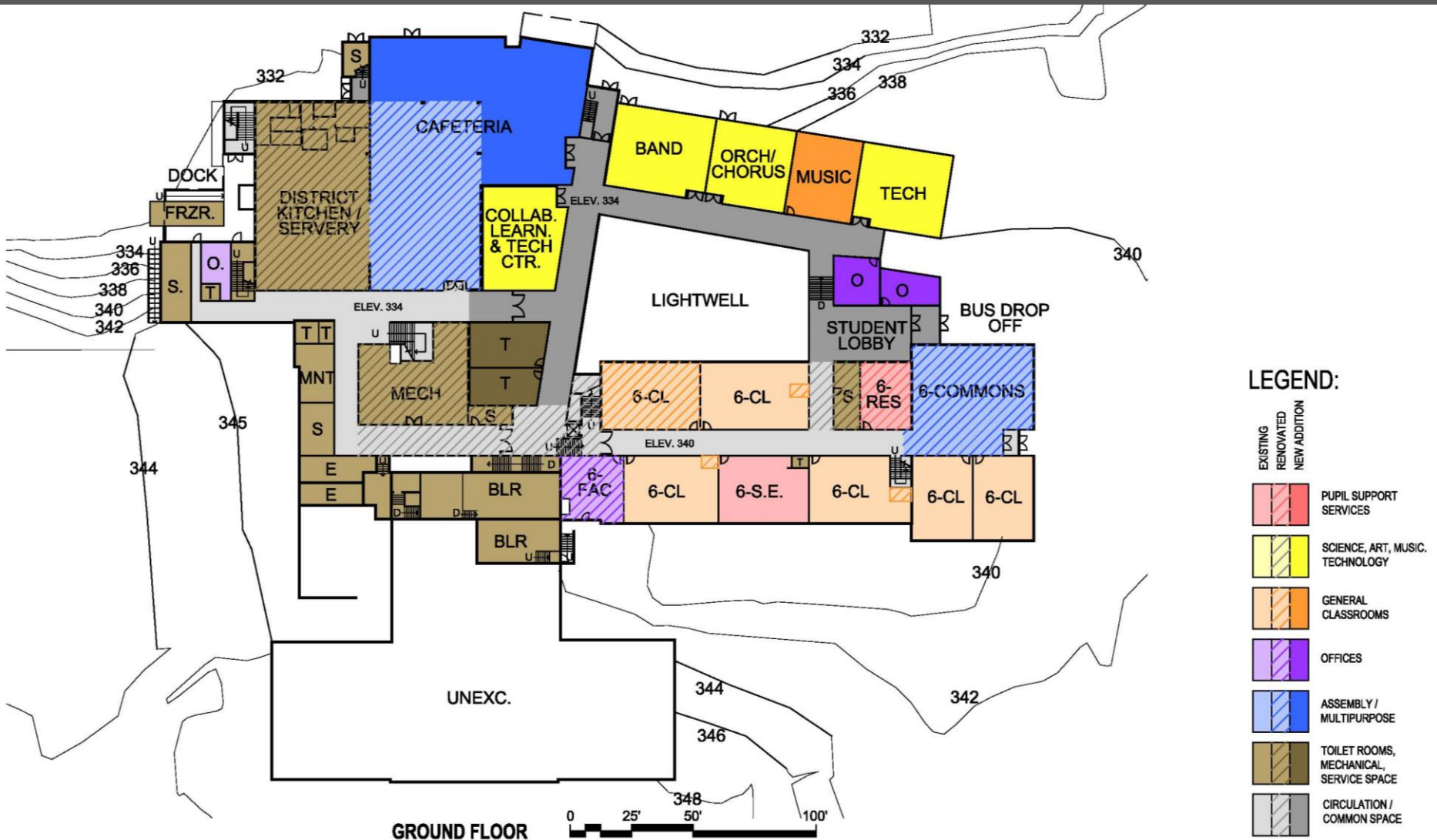
Lenape - No Renovations – Opt B or C



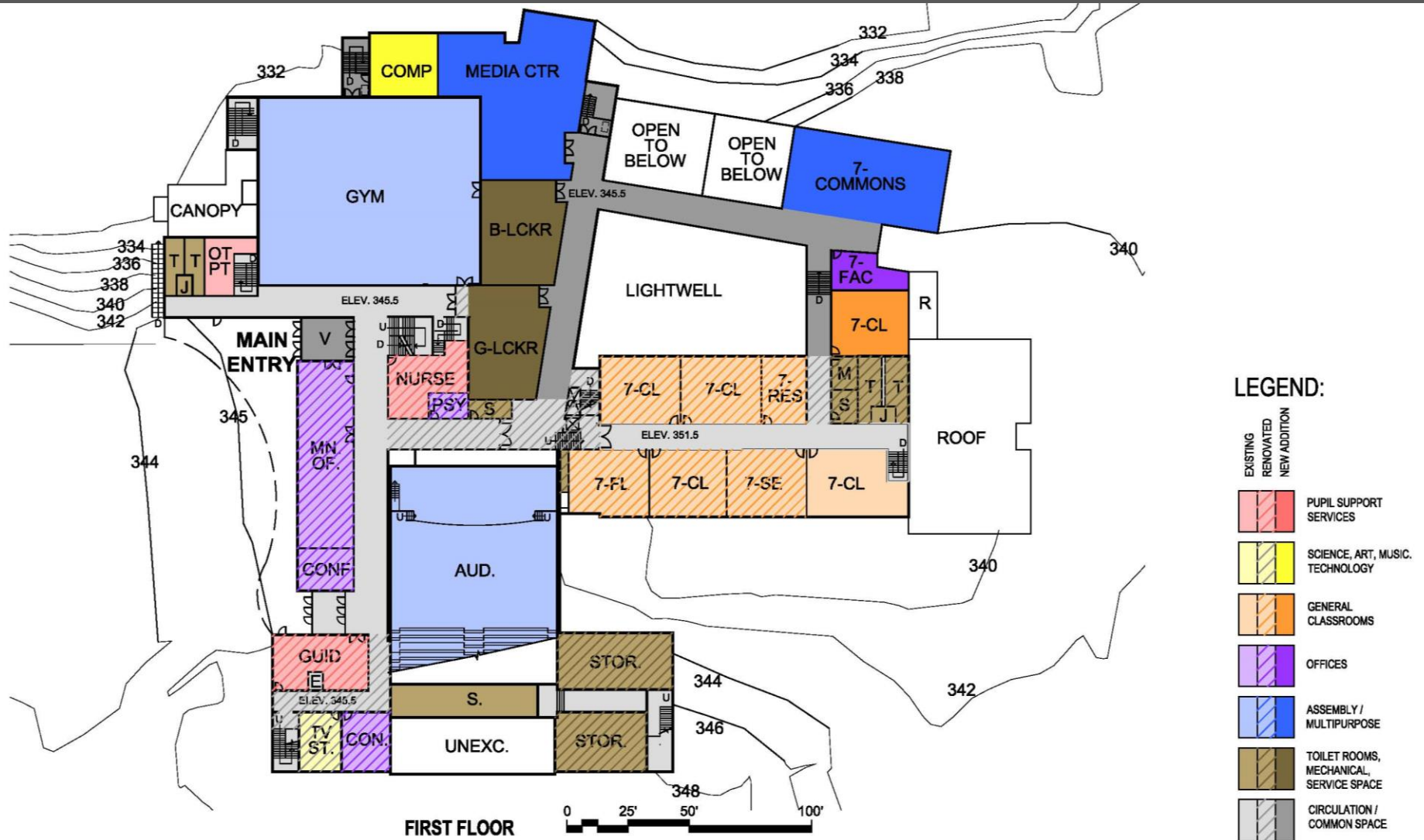
Renovations at MS – Opt B or E



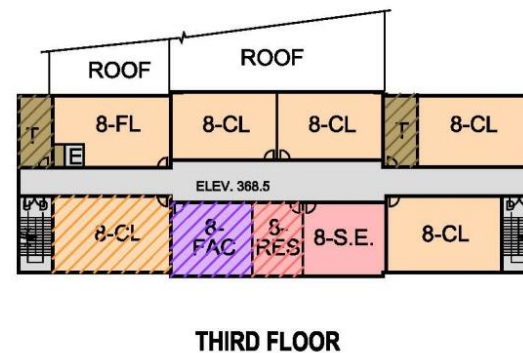
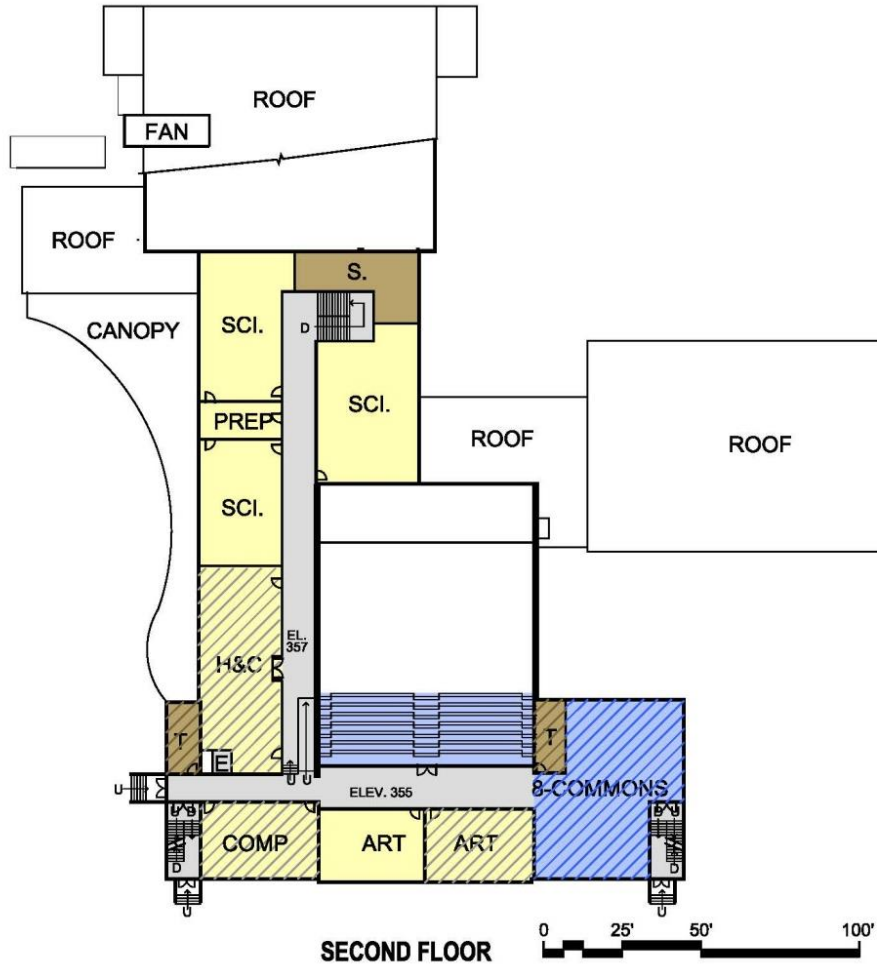
Renovations at MS – Opt B or E





















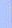


Renovations at MS – Opt B or E



Renovations at MS – Opt B or E



LEGEND:

EXISTING	RENOVATED	NEW ADDITION	
			PUPIL SUPPORT SERVICES
			SCIENCE, ART, MUSIC TECHNOLOGY
			GENERAL CLASSROOMS
			OFFICES
			ASSEMBLY / MULTIPURPOSE
			TOILET ROOMS, MECHANICAL, SERVICE SPACE
			CIRCULATION / COMMON SPACE

Renovations at HS – Opt B

